

# SONOSITE PX

Unparalleled clarity and confidence



FUJIFILM  
SONOSITE

secma  
medical innovation

**This isn't just our most  
advanced point-of-care  
ultrasound solution  
ever, it's YOURS.**

## See More. Do More. **Sonosite PX**

### Unparalleled **Clarity and Confidence**

Inspired, informed, and improved by thousands of hours working side-by-side with clinicians on the front lines of medicine, Sonosite PX point-of-care ultrasound system delivers the most advanced image clarity Fujifilm Sonosite has ever offered, to give clinicians an unparalleled level of confidence for diagnostic and procedural applications.

**This isn't just our most advanced point-of-care ultrasound solution ever, it's YOURS.**



TECHNOLOGY DRIVEN  
5-YEAR STANDARD WARRANTY

## Designed for the Human Touch

The human touch is crucial when it comes to point-of-care ultrasound. That's why Sonosite PX has been designed around every detail for the way clinicians work and deliver care.

### Touch and Physical Controls

Intuitive touch panel and physical buttons for quick access to the most-used controls. Unique raised buttons allow clinicians to make adjustments via feel. Sonosite PX can be operated with gloves and a sterile drape.

### Workflow Efficiency Features

The streamlined user interface improves workflow, allowing clinicians to find controls quickly with fewer touches. Exam types are optimised with most-needed annotations and calculations.



## Get Closer at the Point of Care

We listened and listened some more, working with clinicians across the globe. Sonosite PX was created and inspired by the way they need to deliver care, wherever they deliver it.

### Adaptable Positioning

Adaptable horizontal to vertical work surface allows clinicians to adjust Sonosite PX for optimal bedside ergonomics and bring it closer to the bedside.\*

### Closer Access

The low-profile wheelbase fits under most beds for closer access, especially important while operating the system across the bed. Front and side levers simplify height adjustments.

### Adjustable Height

System height can be raised or lowered for a wide range of users.

### Adaptable Positioning

Work surface adapts from horizontal to vertical with a push or pull of the handle.



## A Whole New Vision of Vision

Sonosite PX point-of-care ultrasound solution delivers the most advanced image clarity Sonosite has ever offered, aided by a new family of transducers, proprietary speckle reduction technology, and improved colour performance.

### **Nerve Blocks**

Better visualise sonographic landmarks when precision and accuracy is paramount during complex blocks.

### **Cardiac Assessments**

Effectively assess cardiac function with optimal frame rates, improved sensitivity, and an enhanced colour map.

### **Musculoskeletal Exams**

See anatomy details accurately in small joints such as fingers to better identify the tell-tale signs of inflammation.

## Environment Inspired

Optimised for the way you move. The way you think.

The agile, small footprint Sonosite PX stand offers maneuverability and dedicated features to keep your system organised and stocked with the essentials.

### Data Management and Connectivity

Wifi, Ethernet port, 1080p digital video output compatible with 1080p displays, (4) USB 2.0 ports, (2) USB 3.0 ports, (1) dedicated USB port for optional printer.<sup>1</sup>

### Durable Transducer Holders

Integrated holders (no more cups) for simplified clean up and ease of use.

### Triple Transducer Connect

Three transducer ports so your most-used transducers are at the ready with the touch of a button.

### Versatile Storage Solutions

The flexible storage system adapts to left or right side needs—gel holder, wipes holder, storage bin, and lockable drawer to secure supplies.

### Cord Management

Power cords are confined within the column to help prevent tangles.

### Cable Management System

Cable catcher and hooks help prevent tangled transducer cables. Even at the lowest stand height, cables are less likely to drag on the floor.

### Low-Profile Wheeled Base

The low-profile wheel base helps position the system close to the bedside.



## Peripheral Accessories

### Barcode Scanner

Save time by automatically linking patient data to the ultrasound scan. English only, where available.

### Medical Grade Printer

Add the optional Black and White Printer to print ultrasound studies.

### Needle Guide Starter Kits

Improve positioning to help guide needles to an exact target on the first attempt.

### PowerPark Cordless Charging Station

Dock the system in a central location while the battery charges for cord-free use. Cord-free use eliminates power cords dragging on the floor, risking contamination. No power cords to clean and disinfect.



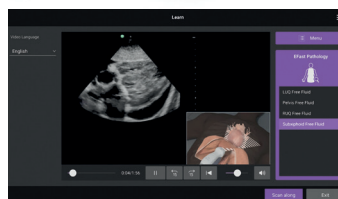
### Flexible Cardiac Functionality

Sonosite PX delivers flexible cardiac functionality for novice to advanced users to support the important challenge of assessing cardiac function.



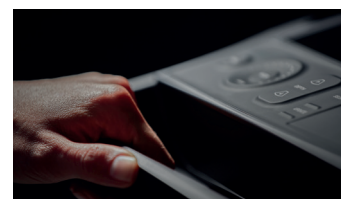
### Guide Needles Precisely

Auto Step Needle Profiling helps in-plane needle visualisation from multiple angles with one system interaction. The clinician simply advances the needle at the angle optimal to reach the target.



### Education at Your Fingertips

Sonosite is dedicated to clinician education. More than 150 scan-along education tutorials are onboard for COVID-19, diagnosis, procedures, pathology, and system and transducer use.



### Rest Assured with Data Security

Sonosite PX includes robust security features to keep patient information safe and networks secure. The system meets FIPS199, FIPS200, and NIST 800-53.

## Scan with Confidence

Sonosite designs, manufactures, and tests transducers in-house. Our transducers aren't only durable, they're also made for superior imaging in the most demanding environments.

- IPX7 rated for immersion\*\*
- Drop-tested to 1 metre
- Sonosite-manufactured transducers are covered by a Sonosite 5-year standard warranty



**C5-1** ●  
**5-1 MHz Curved**  
 Scan Depth: 30 cm

**Exam Types:**

Abdomen,  
 Gynaecology,  
 Lung, Nerve,  
 Musculoskeletal,  
 Early Obstetrics,  
 Obstetrics, Spine



**IC10-3** ●  
**10-3 MHz Curved**  
 Scan Depth: 15 cm

**Exam Types:**

Gynaecology,  
 Early Obstetrics,  
 Obstetrics



**L19-5** ●●  
**19-5 MHz Linear**  
 Scan Depth: 6 cm

**Exam Types:**

Arterial, Lung,  
 Musculoskeletal,  
 Nerve, Ophthalmic,  
 PIV, Superficial,  
 Venous

**Optional Needle Guide Starter Kit**

- Variable angle, in-plane guide
- Multiple-depth transverse, out-of-plane guide
- Disposable in-plane guide



**L12-3** ●  
**12-3 MHz Linear**  
 Scan Depth: 9 cm

**Exam Types:**

Arterial, Breast,  
 Carotid, Lung,  
 Musculoskeletal,  
 Nerve, Ophthalmic,  
 Superficial, Venous



**L15-4** ●  
**15-4 MHz Linear**  
 Scan Depth: 6 cm

**Exam Types:**

Arterial,  
 Breast, Carotid,  
 Musculoskeletal,  
 Nerve, Superficial,  
 Venous



**P5-1**  
**5-1 MHz Phased**  
 Scan Depth: 35 cm

**Exam Types:**

Abdomen,  
 Cardiac, Focused  
 Cardiac, Lung,  
 Obstetrics, Orbital,  
 Transcranial  
 Doppler (TCD)



## Sonosite PX Ultrasound System and Stand Specifications

General System and Stand Specifications	
Dimensions width x height unless otherwise stated	
Stand Dimensions (footprint width x depth)	28.3 inches x 28.3 inches 720 mm x 720 mm
Height Maximum (system and stand)	65 inches/1650 mm monitor raised
Height Minimum (system and stand)	42.2 inches/1072 mm monitor lowered
Height Adjustment Range	9.8 inches/249 mm
Work Surface Adjusts Monitor Angle	0 to 140 degrees 15 degrees from horizontal
Work Surface Angle	55 degrees from horizontal
Weight (system and stand) (system only)	85.1 lbs/38.6 kg 16 lbs 10 oz/7.5 kg
System Controls	Touch panel and physical buttons
Touch Panel Controls Size	10 inches x 5.7 inches 256 mm x 145 mm
Clinical Monitor Monitor Size Display Size	15.6 inches/396 mm 13.5 inches x 7.6 inches 344 mm x 194 mm
Image Size	8.1 inches x 6.1 inches 207 mm x 155 mm
Screen Resolution (minimum) Display Size Image Size	1920 x 1080 pixels 1152 x 864 pixels
Transducer Connections (system and stand) (system only)	(3) Transducer ports (1) Transducer port
Liquid Ingress Protection Rating (system only)	IP22
Immersion Rating (transducers)	IPX7
Operating System	Windows 10 IoT Enterprise 2019 LTSC
Architecture	Digital broadband
Dynamic Range	Up to 183 dB
Gray Scale	256 shades
HIPAA Compliance	FIPS199, FIPS200, and NIST 800-53

### User Interface

**Physical Buttons:** Time Gain Compensation (TGC), gain wheel, auto gain, depth, select, update, touchpad, annotations, calculations, caliper, image save, clip save, freeze, colour, M-Mode, Doppler, 2D  
**Touch Panel:** Projected Capacitive (PCAP) touchscreen  
**Display Formats for Duplex Imaging:** 1/3 and 2/3, 1/2 and 1/2, 2/3, and 1/3, side by side, and full screen duplex  
**Doppler Controls:** Doppler Mode (PW, CW, and TDI), angle, steer, scale, baseline, invert, sweep speed, power, wall filter, sample volume, auto trace, gain, and volume

### Image Modes

2D Broadband Imaging, Tissue Harmonic Imaging, Pulse Inversion Harmonic Imaging, B-Mode, M-Mode, Colour Velocity Doppler (CVD), Colour Power Doppler (CPD), Colour Variance Mode (cardiac only), Pulsed Wave Doppler (PW), Pulsed Wave Doppler Simultaneous, Tissue Doppler Imaging (TDI), Continuous Wave Doppler (CW)

### Image Processing

Sonosite proprietary speckle reduction algorithm, SonoADAPT Imaging Technology, SonoMB™ Multi-beam Technology, dual imaging, Time Gain Compensation (TGC), AutoGain, restore default gains, dynamic range, duplex imaging, Triplex, 8x live zoom, Write zoom  
**Cine Processing:** Dynamic range  
**Cine Processing:** Zoom  
**2D Image Optimisation:** Resolution/General/ Penetration (Res/Gen/Pen), Colour Doppler flow optimisation, colour variance mode, colour compare, 2D sector control (steerable), output power control

### Needle Profiling

(Auto Steep Needle Profiling available on these transducers and exams)  
**C5-1:** Musculoskeletal, Nerve, Spine  
**L19-5:** Arterial, Musculoskeletal, Nerve, PIV, Superficial, Venous  
**L12-3:** Arterial, Breast, Musculoskeletal, Nerve, Superficial, Venous  
**L15-4:** Arterial, Breast, Musculoskeletal, Nerve, Superficial, Venous  
**Needle Guide Starter Kits:** C5-1, IC10-3, L19-5, L12-3, L15-4

### Measurements

**2D:** Distance (10 measurements), area, circumference, ellipse, manual trace, volume, target depth, angle  
**Doppler:** Velocity, velocity pair, slope, time, manual trace, auto trace, heart rate, resistive index, pulsatility index, systolic/diastolic ratio, volume flow, velocity time integral, TAM, TAP  
**Automatic Trace Results (determined by exam type):** Velocity time integral, peak systolic velocity, end diastolic velocity, mean diastolic velocity, resistive index, pulsatility index, TAP, gate depth, systolic/diastolic ratio, velocity max, velocity mean, pressure gradient max, pressure gradient mean  
 Editable results data sheets and reports

### Data Management and Connectivity

**System and Stand:** Wifi, Ethernet port, 1080p digital video output compatible with 1080p displays, (4) USB 2.0 ports, (2) USB 3.0 ports, (1) dedicated USB port for printer, DC input for AC or stand battery power  
**System Only:** (2) USB 3.0 ports  
 ECG connector  
 Storage capacity alert  
 Auto delete function  
 IPv4 and IPv6 networking  
 Supports automatic time reconciliation with a time server

### Wireless Solutions

**2.4 GHz and/or 5 GHz Wireless:** 802.11 (A, B, G, N, and AC networking)  
**Key Management Protocols:** WEP64, WEP128, WPA/WPA2 (personal and enterprise)

### DICOM Workflow Management

Store for images, clips, and structured reports, media storage (USB export), storage commitment, modality worklist, Modality Performed Procedure Step (MPPS)

### Data Security

System meets Federal Information Processing Standards (FIPS) for moderate security control selections per FIPS199, FIPS200, and NIST 800-53  
 Secure boot  
 User and role based authentication  
 LDAP support  
**Security Policies:** Open, WEP, Radius, WPA, WPA2  
 Complex password rules support  
 Federal System Use Notification support  
 Emergency mode support  
 Secure DICOM communication support  
**Data Encryption for Data at Rest:** FIPS 140-2 validated encryption algorithms  
**Data Encryption for Data in Transit:** FIPS 140-2 validated encryption algorithms  
 System wide white-listing  
 Hardened operating system and services  
 System firewall  
 MDS2 located on Sonosite.com

### Stand Includes

Adjustable stand head, input/output connections, (4) transducer holders, Triple Transducer Connect, cable management system, dual gel holder, wipes holder, storage bin, lockable drawer, stand battery, cord wrap, power cord  
**Casters:** (4) independent locking wheels

### Warranty

Sonosite offers an industry-leading, 5-year standard warranty on most ultrasound systems and Sonosite-manufactured transducers to ensure your equipment is protected. Learn more on [sonosite.com](http://sonosite.com)

### Supported Languages

**System User Interface Languages:** English, French, German, Italian, Japanese, Spanish, Simplified Chinese

\* When Sonosite PX is used on the stand.

\*\* Protected against water immersion for 30 minutes at a depth of up to 1 metre.

† Off the stand, Sonosite PX has (2) USB 3.0 ports.